



TAI-SAW TECHNOLOGY CO., LTD.

No. 3, Industrial 2nd Rd., Ping-Chen Industrial District,
Taoyuan, 324, Taiwan, R.O.C.

TEL: 886-3-4690038 FAX: 886-3-4697532

E-mail: tstsales@mail.taisaw.com Web: www.taisaw.com

Product Specifications Approval Sheet

Product Name: SAW Resonator 840 MHz SMD 3.8X3.8 mm

TST Parts No.: TC0327BA3510

Customer Parts No.: _____

Company: _____
Division: _____
Approved by : _____
Date: _____

Checked by: _____ Hong Pu Lin *Hong Pu Lin*

Approval by: _____ Andy Yu *Andy Yu*

Date: _____ 2020/09/15

1. Customer signed back is required before TST can proceed with sample build and receive orders.
2. Orders received without customer signed back will be regarded as agreement on the specifications.
3. Any specifications changes must be approved upon by both parties and a new revision of specifications shall be released to reflect the changes



TAI-SAW TECHNOLOGY CO., LTD.

No. 3, Industrial 2nd Rd., Ping-Chen Industrial District,
Taoyuan, 324, Taiwan, R.O.C.

TEL: 886-3-4690038 FAX: 886-3-4697532

E-mail: tstsales@mail.taisaw.com Web: www.taisaw.com

SAW Resonator 840 MHz

MODEL NO.: TC0327BA3510

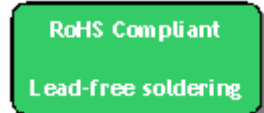
REV. NO.:1

A. FEATURES:

1. 1-Port Resonator.

B. MAXIMUM RATING:

1. Input Power Level: 0 dBm
2. DC voltage: 12 V
3. Operating Temperature: -40°C to +85°C
4. Storage Temperature: -40°C to +85°C
5. Moisture Sensitive Level (MSL): Level 1



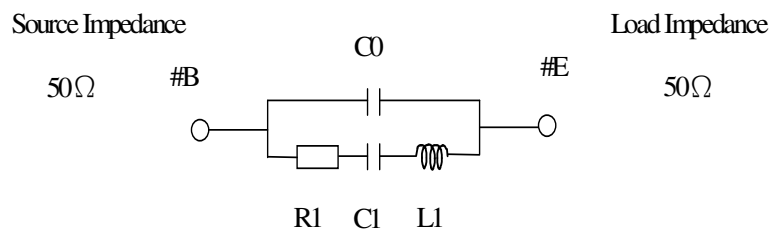
Electrostatic Sensitive Device

C. ELECTRICAL CHARACTERISTICS:

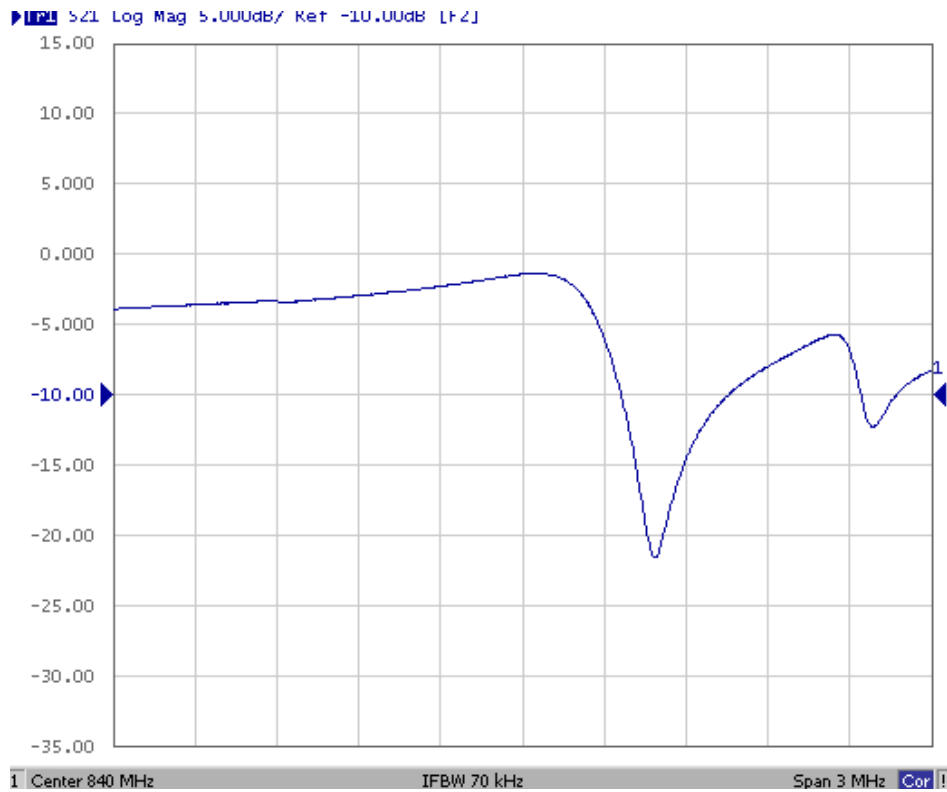
Characteristic	Units	Minimum	Typical	Maximum
Center frequency Fr	MHz	839.950	840	840.050
Insertion Loss IL	dB		1.3	2.0
Unloaded Quality factor		-	8000	-
Equivalent Elements				
Motional capacitance C1	fF	-	1.36	-
Motional inductance L1	μH	-	26.2	-
Motional resistance R1	Ohm	-	17	-
Parallel capacitance Co	pF	-	2.46	-
Temp.coeff.	ppm/c*2	-	0.032	-
Turnover To	deg.C	-	25	-
Package size		SMD 3.8X3.8X1.4mm		

D. EQUIVIRENT CIRCUIT:

One-Port Resonator:



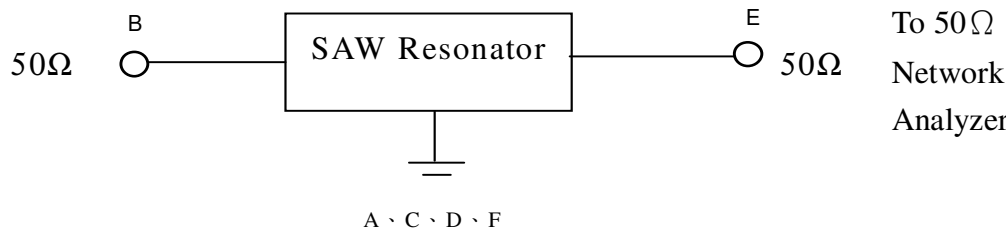
E. FREQUENCY CHARACTERISTICS:



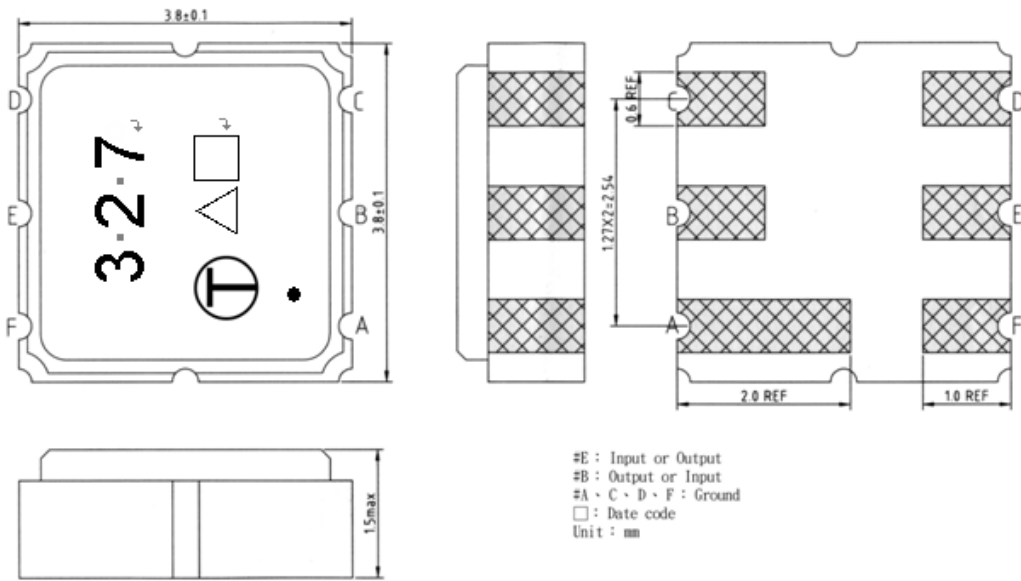
F. TEST CIRCUIT:

Network analyzer

From 50Ω
Network
Analyzer



G. OUTLINE DRAWING:

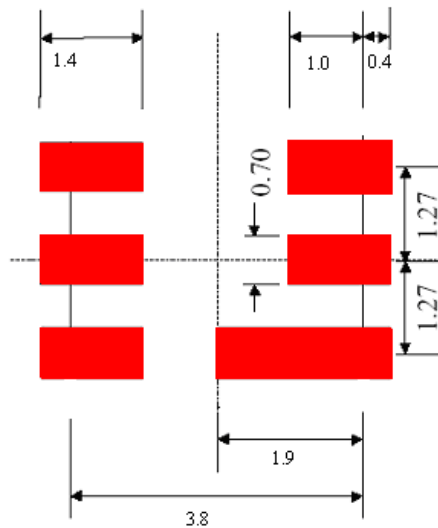


Date code: Provided by planer each year

△ Product Year Code

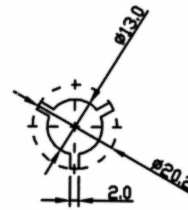
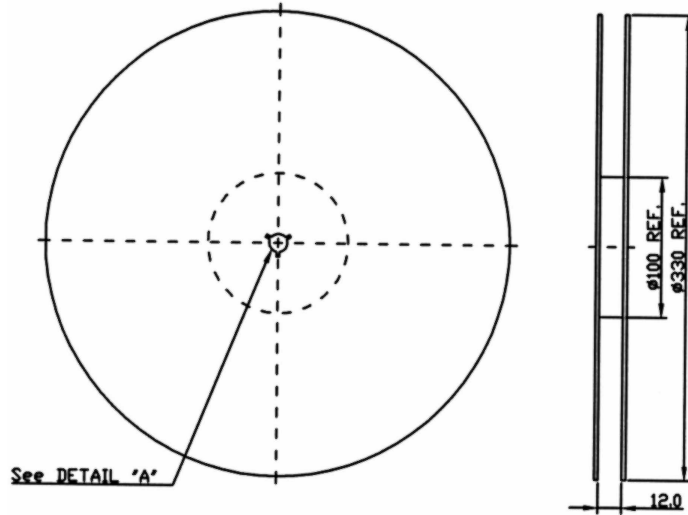
Year	2005	2006
	2007	2008
	.	.
Product Code	C	c

H. PCB FOOTPRINT:

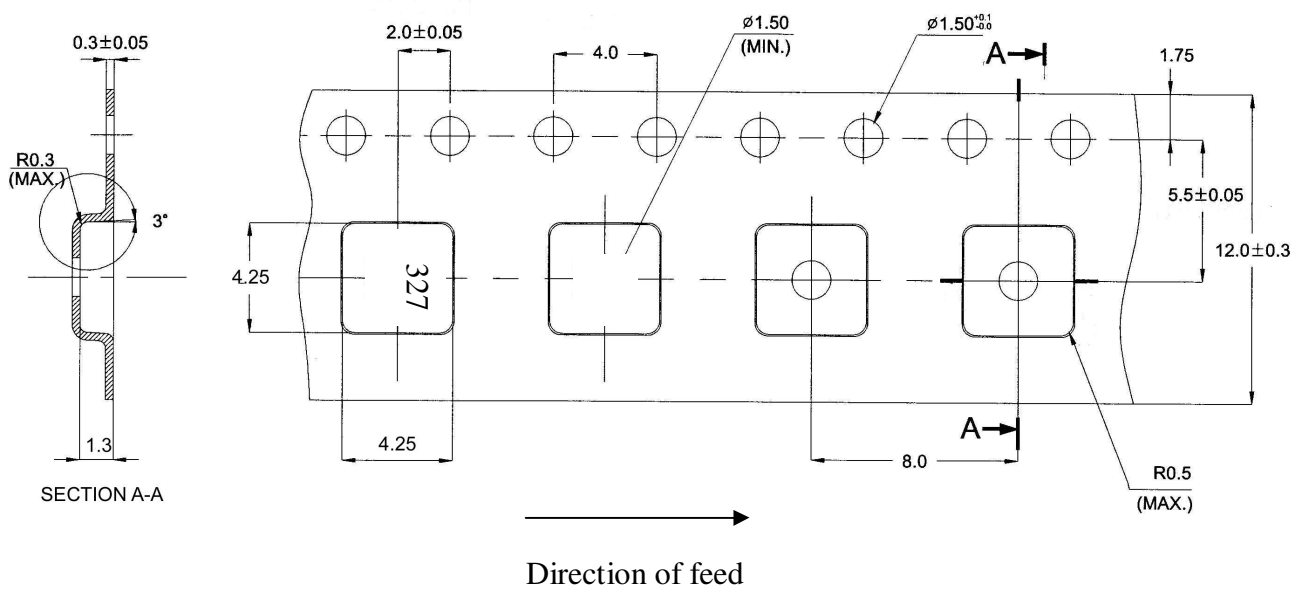


I. PACKING:

1. REEL DIMENSION



2. TAPE DIMENSION



J. REFLOW PROFILE

1. Preheating shall be fixed at 150~180°C for 60~90 seconds.
2. Ascending time to preheating temperature 150°C shall be 30 seconds min.
3. Heating shall be fixed at 220°C for 50~80 seconds and at 260°C +0/-5°C peak (20~40sec).
4. Time: 2 times.

